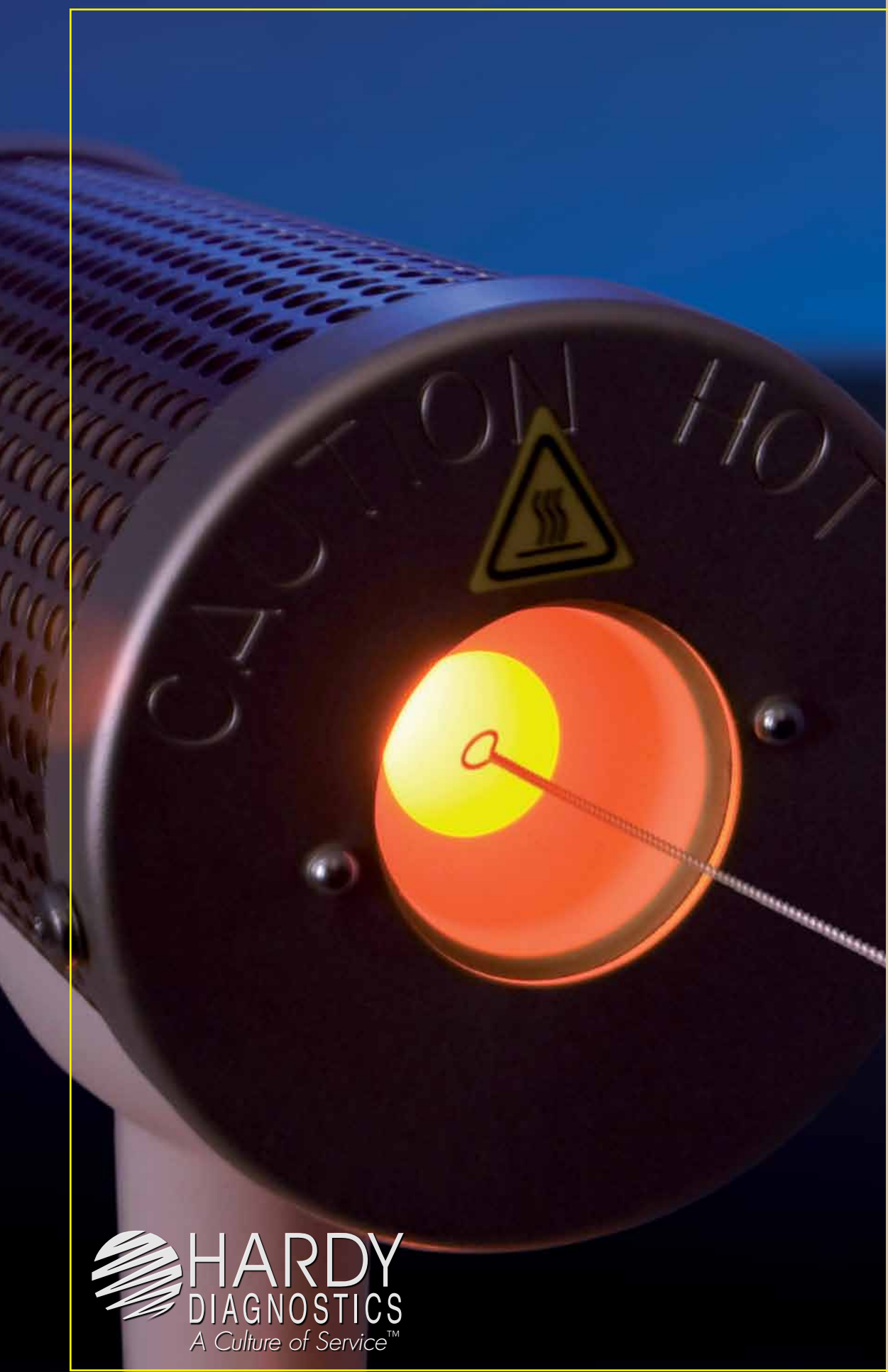


# Equipment



# EQUIPMENT

## Table of Contents

- J1 Air Samplers
- J2 Autoclaves
- J3 Bacti-Cinerator™ - Loop Sterilizers
- J4 Blood Culture Supplies
- J4 Blenders - Laboratory
- J5 Centrifuges
- J7 Colony Counters
- J8 Dry Bath Incubators and Heat Blocks
- J8 Incubators
- J10 Hot Plates
- J11 Label Guns
- J12 Lamps
- J12 Masticators / Homogenizers
- J13 Microscopes
- J19 Nutating Mixers
- J19 Petri Plate Filler
- J20 Scales
- J20 Stainers
- J20 Stop Watches and Timers
- J21 Thermometers
- J21 Tissue Grinders
- J22 Vortex Mixers
- J23 Water Baths



### Headquarters

1430 West McCoy Lane  
 Santa Maria, CA 93455  
 800.266.2222 : phone  
 805.346.2760 : fax  
 Sales@HardyDiagnostics.com  
 www.HardyDiagnostics.com

### Distribution Centers

Santa Maria, California  
 Centralia, Washington  
 Salt Lake City, Utah  
 Phoenix, Arizona  
 Dallas, Texas  
 Springboro, Ohio  
 Lake City, Florida  
 Albany, New York



ISO 13485  
 FM 572526

The Quality Management System at the Hardy Diagnostics manufacturing facility is certified to ISO 13485.

Copyright © 2011 Hardy Diagnostics

# Air Samplers

## Microbial Air Sampler - Basic Air

The Basic Air is a microbial air sampler that offers fundamental features. It is designed for users that don't need connectivity to barcode, or duplicate simultaneous testing capability (no slave unit). This is an economy version for basic air sampling, by Neutec Group, Inc.

- Sampling head is constructed of heavy duty plastic
- Sampling by volume (not timed) for higher accuracy and reproducibility
- Utilizes standard 60mm or 90mm agar plates
- Rechargeable Ni-Metal Hydride 7.2V internal battery pack, for up to eight hours of operation
- Delayed activation mode to avoid collector contamination
- Carrying case not included

Each..... 5533



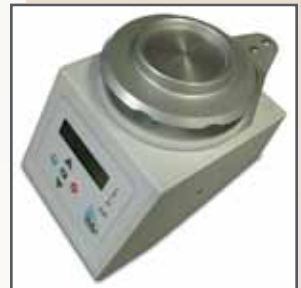
Cat. no. 5533

## Microbial Rotating Air Sampler - Spin Air Basic

Designed for users that don't need connectivity to barcode, or duplicate simultaneous testing capability (no slave unit). The unit can be used in a single location, by Neutec Group, Inc.

- A unique rotating plate holder for even surface spread of microorganisms, for improved accuracy
- Sampling by volume (not timed) for higher accuracy and reproducibility
- Utilizes standard 60mm or 90mm agar plates
- Rechargeable Ni-Metal Hydride 7.2V internal battery pack, for up to eight hours of operation
- Delayed activation mode to avoid collector contamination

Each..... 5532



Cat. no. 5532

## Microbial Rotating Air Sampler - Spin Air

This innovative microbiological air sampler pulls air in a controlled fashion against the spinning agar plate, by Neutec Group, Inc.

- Bar code connectivity
- A unique rotating plate holder for even surface spread of microorganisms, for improved accuracy
- Sampling by volume (not timed) for higher accuracy and reproducibility
- Utilizes standard 60mm or 90mm agar plates
- Rechargeable Ni-Metal Hydride 7.2V internal battery pack, for up to eight hours of operation
- Delayed activation mode to avoid collector contamination
- Optional duplicate simultaneous sampling with a low cost slave unit

Each..... 5500



Cat. no. 5500

## Spin Air Slave Unit

Spin Air Slave Unit allows you to cut your sampling time in half. Just add one slave connected to the main unit and the slave will share the microprocessor and power supply of the main unit. This allows two petri plates to be inoculated quickly. Slave unit requires a Spin Air, Cat. no. 5500, by Neutec Group, Inc.

Each..... 5502



Cat. no. 5502

## Spin Air Barcode Reader

Barcode Reader for the Spin Air microbial air sampler by Neutec Group, Inc.

Each..... 5700



Cat. no. 5700

## Spin Air Printer Cable

The serial printer cable for the Spin Air microbial air sampler allows you to interface and print sampling information directly from the Spin Air, by Neutec Group, Inc.

Each..... 5510

### Spin Air Serial Printer

The Spin Air Serial Printer allows you to print your results from sampling. Cable, Cat. no. 5510 is required with printer, by Neutec Group, Inc.

Each..... 3069



Printer

Cat. no. 3870EA

## Autoclaves

### Autoclave, Electric

The fully automatic sterilizer offers the user the ability to decrease the overall drying time of sterilized items by as much as 60% (unwrapped cycle) as compared to steam gravity sterilizers with conventional drying capability. Two trays supplied, by Tuttnauer.

- Chamber Dimensions: 15.1" diameter x 29.9" (D)
- Overall Dimensions: 34.5" (D) x 26" (W) x 20.6" (H)
- Tray Dimensions: 11.3" (W) x 26.6" (L) x 1" (H) and 13.8" (W) x 26.6" (L) x 1" (H)
- Cycle Time: Cold start 55 minutes, hot start 40 minutes

EA Series, Each .....3870EA

With Printer, Each .....3870EAP



Cat. no. 2340M

### Autoclave, Classic M Series (manual)

The standard for steam autoclaves. This autoclave feature a sleek, modern design that compliments any health care facility, by Tuttnauer.

- Chamber Dimensions: 9" diameter x 18.5" (D)
- Overall Dimensions: 21.5" (D) x 20" (W) x 14.4" (H)
- Tray Dimensions: 6.7" (W) x 16.3" (L) x 0.8" (H), three trays supplied
- Cycle time: cold start 30 minutes, hot start 20 minutes

Each..... 2340M



Cat. no. 2540M

- Chamber Dimensions: 10" diameter x 18.7" (D)
- Overall Dimensions: 21.5" (D) x 20" (W) x 14.4" (H)
- Tray Dimensions: 6.7" (W) x 16.3" (L) x 0.8" (H), four trays supplied
- Cycle time: cold start 30 minutes, hot start 20 minutes

Each..... 2540M

- Chamber Dimensions: 15.1" diameter x 29.9" (D)
- Overall Dimensions: 34.5" (D) x 26" (W) x 20.6" (H)
- Tray Dimensions: 11.3" (W) x 26.6" (L) x 1" (H) and 13.8" (W) x 26.6" (L) x 1" H, two trays supplied
- Cycle time: cold start 32 minutes, hot start 23 minutes

Each..... 3870M



Cat. no. 3870M

### Autoclave, Valueklave™, Manual

Provides all basic sterilization needs at an economical price. The compact size makes it a perfect primary unit for small offices or a second autoclave for larger practices, by Tuttnauer.

- Chamber Dimensions: 7" diameter x 13" (D)
- Overall Dimensions: 17.9" (D) x 17.4" (W) x 12" (H)
- Tray Dimensions: 4.7" (W) x 11.6" (L) x 0.8" (H), three trays supplied
- Cycle Time: cold start 12 minutes, hot start 9 minutes

Each..... 1730M

### Autoclave, Kwiklave™ MK, Manual, Shortened Cycle

The standard for steam autoclaves, the M series, is available in a rapid Kwik cycle. The MK offers all the proven dependable features of the classic autoclave with a shortened heating cycle. The sterilization chamber reaches the required temperature and pressure in a fraction of the time, so the entire sterilization procedure takes just minutes, by Tuttnauer.

- Chamber Dimensions: 10" diameter x 18.7" (D)
- Overall Dimensions: 21.5" (D) x 20" (W) x 14.4" (H)
- Tray Dimensions: 6.7" (W) x 16.3" (L) x 0.8" (H), four trays supplied
- Cycle Time: Cold start 12 minutes, hot start 9 minutes
- Comes with built in printer

Each..... 2540MK



Cat. no. 1730M

### Autoclave, MLS Series Portable Top-Loading

A space-efficient portable autoclave that provides a convenient alternative to using a centralized autoclave for sterilizing media and instruments, by Sanyo.

- Chamber Dimensions: 37cm diameter x 41.5cm (D)
- Overall Dimensions: 47.8cm (W) x 63.2cm (D) x 74.8cm (H)
- Weight: 61kg (134.5 lbs.)
- Sterilization Temperature: 15 to 135 °C (239 to 275 °F)
- Maximum Pressure: 235 kPa (34.14 psi)

Each..... 97002402



Printer

Cat. no. 2540MK

## Bacti-Cinerator™ - Loop Sterilizers

### Bacti-Cinerator IV

Sterilizes loops and needles by infrared heat, safely and conveniently deep inside the ceramic tube, by McCormick Scientific.

- No hazardous open flame, a safeguard for laboratory personnel
- Prevents infectious spatter and/or cross contamination
- Ideal for use in anaerobic chambers
- Complete sterilization takes only 5 to 7 seconds
- Optimum sterilizing temperature of 1,500 °F
- Weighted base for stability
- Convenient storage holes built into the base for 6 needle holders

Each..... 004002

Replacement heat element for Bacti-Cinerator™ IV

Each..... 001373

Replacement switch for Bacti-Cinerator™ IV

Each..... 001346

Replacement heat element for Bacti-Cinerator™ III

Each..... 001304



Cat. no. 97002402

### Alcohol Burner - Classic

by VEE GEE Scientific

- Sturdy, heavy-walled glass design with a large capacity of 150ml
- Fitted with a nickel-plated brass cap used to extinguish the flame and to prevent the evaporation of alcohol
- Either methyl or ethyl alcohol can be used with the lamp

Each..... 3040

Alcohol Burner Replacement Wick, by VEE GEE Scientific.

12/pack ..... 3040W



Cat. no. 004002



Cat. no. 3040



Cat. no. LF8000000

### LabFlame IR™ Loop Sterilizer, Bunsen Burner

LabFlame IR™ is optimized for use in microbiology laboratories, by Neutec Group, Inc.

- Stainless steel housing is made of one piece, free of any gaps or rims, easy to clean, and fully UV resistant
- Optimized air-flow system provides a uniform and constant flame, even in safety cabinets with horizontal or vertical air flow
- Connectable to any kind of gas source
- Automatically cuts the gas supply after every flame extinguish and checks the burner temperature

Each..... LF8000000



Cat. no. A100720

## Blood Culture Supplies

### Needle, Airway

by Organon Teknika

- Sterile subculturing needle disposable for use with blood culture bottles
- To aerate with filtered air and to prevent build up of gas pressure during incubation
- Easy to use and disposable

100/case ..... 33766

### Safety SubCulture Unit (SCU)

A needleless device used to obtain samples from positive blood culture bottles, by ITL Corporation.

- Reduces risk of needlestick injury
- Plastic tip safely pierces the bottle septum and makes it easy to insert and remove from culture bottle
- Integrated filter cap controls gas or culture discharge for an added level of safety

360/case ..... A100720



Cat. no. 58977023

## Blenders - Laboratory

### Blender, Lab, Single Speed, Stainless Container

For rapid pulping or mixing. Widely used for emulsifying and blending cosmetics, foods, vitamins, paints, paper, biologicals, and oils, by Waring.

- Removable containers of heat-resistant stainless steel
- 1L working capacity
- Blades revolve at 20,000 RPM
- 0.4 hp motor
- Enamel-coated metal base
- Underwriters Laboratories Inc. (UL) listed

Each..... 58977023



Cat. no. 58985012

### Blender, Lab, Variable Speed, Glass Container

Variable speed blender, with 1.2L glass container; allows adjustment of speeds for mixing, stirring, blending, or homogenizing. Widely used for emulsifying and for blending cosmetics, foods, vitamins, paints, paper, biologicals, and oils, by Waring.

- Speeds may be adjusted from 0 to 20,000 RPM and pre-adjusted to allow for accurate reproductions
- Motor housing is chrome and green epoxy for easy cleaning
- Equipped with a 0.4 hp motor
- Motor and blending assembly do not require lubrication
- 1,200ml total volume
- For 120V

Each..... 58985012

# Centrifuges

## Prism™ Air-Cooled Microcentrifuge

The Prism™ uniquely designed 24-place rotor allows easy access to the tops of sample tubes, allowing for faster work flow, by Labnet International, Inc.

- Unique Multi-Flow air cooling technology
- Includes easy access rotor with optional StripSpin
- Quick acceleration and deceleration time
- Dimensions: 9.45" (W) x 13.8" (D) x 7.48" (H)
- Weight: 21 lbs. (9.6 kg)
- Speed: 500 - 15,000 RPM
- RCF (relative centrifugal force): 21,200 x g
- Accommodates 1.5ml - 2.0ml tubes, 24 tube capacity

Each..... C2500



Cat. no. C2500

## Spectrafuge™ 16M Microcentrifuge

The Spectrafuge™ 16M is the perfect, high speed, compact microcentrifuge, providing extremely fast acceleration and deceleration, by Labnet International, Inc.

- Brushless, maintenance-free motor
- Accommodates 1.5ml - 2.0ml tubes, 18 tube capacity
- Dimensions: 8.25" (W) x 8.9" (D) x 7.6" (H)
- Weight: 10 lbs. (4.5kg)
- Variable Speed: 1,000 RPM - 14,000 RPM
- RCF (relative centrifugal force): 16,000 x g

Each..... C0160



Cat. no. C0160

## Spectrafuge™ 24D Digital Microcentrifuge

The Spectrafuge 24D combines innovations such as a unique, easy access rotor, exclusive multi-flow air cooling system and high performance drive, by Labnet International, Inc.

- Set and view speed in RPM or g-force
- Digital set and display of parameters
- Powerful brushless motor for quick acceleration
- Accommodates 1.5ml - 2.0ml tubes, 24 tube capacity
- Dimensions: 9.25" (W) x 11.5" (D) x 8.5" (H)
- Weight: 18 lbs. (8.1kg)
- Variable Speed: 500 - 13,300 RPM
- RCF (relative centrifugal force): 16,300 x g

Each..... C2400B



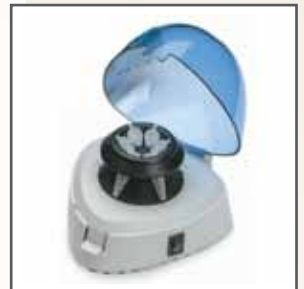
Cat. no. C2400B

## Spectrafuge™ Mini Centrifuge

This personal sized centrifuge is ideal for microfiltration and quick spin downs from the walls and caps of microcentrifuge tubes, by Labnet International, Inc.

- Complete with interchangeable rotors for microtubes and PCR strips
- Ideal for quick spin downs and microfiltration
- Durable lid hinge
- Accommodates 1.5ml - 2.0ml tubes, 6 tube capacity
- Dimensions: 5.9" (W) x 5.9" (D) x 4.6" (H)
- Weight: 1 lbs. (0.45kg)
- Fixed speed (6,000 RPM)
- RCF (relative centrifugal force): 2,000 x g

Each..... C1301



Cat. no. C1301



Cat. no. Z100A

### Z100A Clinical Centrifuge

The Z100A is suitable for a variety of applications in the clinical setting or research lab, by Labnet International, Inc.

- Ideal for doctor's offices and small clinics
- Adapters available for all common blood draw tubes
- Clear lid with safety lock
- Accommodates up to 15ml tubes, 6 tube capacity
- Dimensions: 11" (W) x 13.75" (D) x 10.2" (H)
- Weight: 12 lbs. (5.5kg)
- Variable speed: 1,000 RPM - 4,000 RPM
- RCF (relative centrifugal force): 1,900 x g

Each..... Z100A



Cat. no. 614V

### Centrifuge, Fixed Angle

Designed for use in multiple applications where proper speed selection is critical for sample integrity, by The Drucker Co.

- Fixed angle rotors offers reliable separation results for many laboratory applications
- Spins up to 6 test tubes
- Accommodates up to 15ml (17mm x 125mm) tubes
- Dimensions: 11" (W) x 8.5" (H) x 12.5" (D)
- Weight: 18.5 lbs.
- Variable Speed: 1,000 - 3,200 RPM
- RCF (relative centrifugal force): 30 - 1,290 x g

Each..... 614V



Cat. no. 755V24

### Centrifuge, Horizontal

A cost effective horizontal centrifuge with an easy-to-use digital time control for precise spin time. One button operation assures consistent and repeatable runs for perfect separation, by The Drucker Co.

#### 24-Place, 3,150 RPM

Holds 24 test tubes up to 16ml (17mm x 100mm). Includes a "0" RPM safety lid lock. UL/CSA compliant.

- Dimensions: 14.5" (W) x 9" (H) x 17" (D)
- Weight: 39 lbs.
- Fixed speed: 3,150 RPM
- RCF (relative centrifugal force): 2,000 x g

Each.....755V24



Cat. no. 755V12

#### 12-Place, 3,200 RPM

Holds 12 test tubes up to 14ml (up to 17mm x 100mm). Includes a "0" RPM safety lid lock. UL/CSA compliant.

- Dimensions: 11" (W) x 8.5" (H) x 12.5" (D)
- Weight: 18.5 lbs. (8.4kg)
- Fixed speed: 3,200 RPM
- RCF (relative centrifugal force): 1,540 x g

Each.....755V12



Cat. no. 642E

#### 6-Place, 3,380 RPM

Holds 6 test tubes up to 14ml (up to 17mm x 100mm). Includes a "0" RPM safety lid lock. UL/CSA compliant.

- Dimensions: 11" (W) x 8.5" (H) x 17" (D)
- Weight: 18.5 lbs.
- Fixed speed: 3,380 RPM
- RCF (relative centrifugal force): 1,600 x g

Each..... 642E

### Centrifuge, Microcentrifuge, Galaxy 5D

The advanced technology and streamlined design of the Galaxy line deliver optimum performance in a compact unit.

- All parameters, including RPM, RCF, and time, are set and displayed digitally
- Accelerates quickly to the set speed
- Controlled braking for a soft stop without disrupting fragile samples
- 12 place
- 2ml capacity
- Fixed angle microtube rotor
- Dimensions: 7.5" (W) x 7" (H) x 4.5" (D)
- Weight: 3.3 lbs.
- Fixed speed: 8,500 RPM
- RCF (relative centrifugal force): 5,200 x g

Each..... 37001594



Cat. no. 37001594

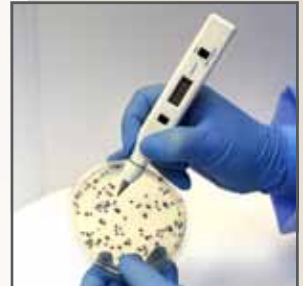
## Colony Counters

### Colony Counter System, Pen Style

Designed to count colonies, plaques, or perform virtually any repetitive counting task, by Scienceware.

- Battery operated pen-style counter has a selector switch for counting up or down which can be used to correct errors during counting or to check count by counting backwards
- Operates on 4 C batteries or a 6V AC adapter (included)

Each..... 54848310



Cat. no. 54848310

### Colony Counter, Dark Field

- Exclusive dark field design provides even, glare-free illumination
- Highly polished, annular reflector spreads light from 40-watt bulb uniformly over the entire culture plate
- Contrasted against darkfield background, colonies are bright and readily distinguished from other structures in the agar
- Dimensions: 26.7cm (W) x 27.9cm (H) x 25.4cm (D)
- 120V

Each..... 23610157



Cat. no. 23610157

### Colony Counter, Flash and Grow

Automatic colony counter that adapts to your microbiology lab needs. Combining image processing and analysis with a camera and light source. Ideal for labs involved with drug development and production, food and milk testing, and environmental monitoring, by Neutec Group, Inc.

- Accurately count bacterial and mammalian colonies
- Provides automatic counting of pour, spread, and spiral plates with one button, triggering an instant count
- Utilizes LED illumination for different types of agars
- 120V

Each..... 6010



Cat. no. 6010

### Colony Counter, Hand Tally

Comfortable thumb push and easy to read numerals are ideal for counting cells or any other high number tally up to 9,999.

Each.....975601



Cat. no. 975601



Cat. no. 112001

## Dry Bath Incubators and Heat Blocks

### Dry Bath Incubator, Analog, 1 Block Capacity

Features a hydraulic thermostat and supplied with a block extractor; blocks sold separately, by Boekel Scientific.

- Dimensions: 8" (W) x 9.75" (L) x 3.25" (H)
- Weight: 4 lbs.
- Temperature Range: from +5 °C to 150 °C, uniformity within the block at 37 °C is +/- 0.5 °C
- 120V

Each.....112001



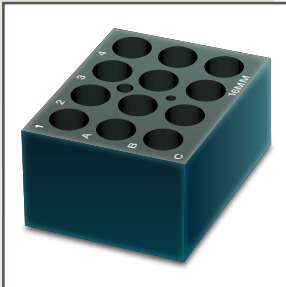
Cat. no. 112002

### Dry Bath Incubator, Analog, 2 Block Capacity

Features amber pilot light and supplied with a block extractor, blocks sold separately, by Boekel Scientific.

- Dimensions: 8" (W) x 9.8" (L) x 3.5" (H)
- Weight: 6 lbs.
- Temperature Range: from +5 °C to 130 °C.
- Accommodates two heat blocks (same size or different sizes)
- 120V

Each.....112002



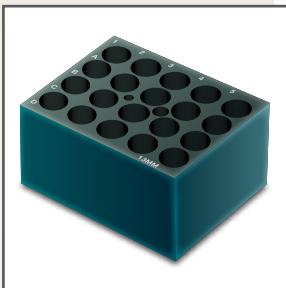
Cat. no. 110016

### Heat Block, 12 Tube

Heat block for 12 tubes; can be used for bioindicator "spore" ampules, by Boekel Scientific.

- For 16mm tubes
- Dimensions: 3" (W) x 3" (L) x 3.5" (H)
- Block Weight: 1 lb.

Each.....110016



Cat. no. 110013

### Heat Block, 20 Tube

Heat block for 20 tubes, by Boekel Scientific.

- For 13mm tubes
- Dimensions: 3" (W) x 3" (L) x 3.5" (H)
- Block Weight: 1 lb.

Each.....110013

## Incubators

### Analog Incubators

#### Culture Control Analog Incubators

Made of 22 gauge steel with clear see-thru door, or solid door for convenience. Exterior is powder coated for both scratch and stain resistance. All analog incubators come with a thermometer and have at least one adjustable shelf, by Boekel Scientific.

- Chamber Volume: 1.4 cu. ft.
- Dimensions: 15.125" (W) x 19.5" (H) x 19" (D)
- Weight: 36 lbs.
- Electrical: 115 volt/60 Hz
- Temperature Range: Ambient +10 °C to 90 °C
- Solid door, 2 shelves, 5 hour timer

Each.....139200

*Continued on next page*



Cat. no. 139200

### Culture Control Analog Incubators (Continued)

- Chamber Volume: 2.5 cu. ft.
- Dimensions: 19.125" (W) x 21" (H) x 23" (D)
- Weight: 47.5 lbs.
- Electrical: 115 volt/60 Hz
- Temperature Range: Ambient +10 °C to 90 °C
- Solid door, 2 shelves, 5 hour timer

Each.....139300



Cat. no. 139300

- Chamber Volume: 5 cu. ft.
- Dimensions: 19.125" (W) x 36" (H) x 23" (D)
- Weight: 74 lbs.
- Electrical: 115 volt/60 Hz
- Temperature Range: Ambient +10 °C to 90 °C
- Solid door, 2 shelves, 5 hour timer

Each..... 139400



Cat. no. 139400

### Economy Analog Incubator

Ideal for school laboratories and as a backup incubator for hospitals, offering superior value for a wide range of routine applications, by Boeckel Scientific.

- Chamber Volume: 0.8 cu. ft.
- Cold-rolled steel construction
- Supplied with two adjustable shelves and a spirit filled thermometer
- Dimensions: 13" (W) x 16.25" (H) x 14" (D)
- Weight: 19 lbs.
- Temperature Range: Ambient +5 °C to 60 °C
- Timer not included

Each..... 132000



Cat. no. 132000

### Digital Incubators

#### Digital Incubators

Ideal for incubating and culturing reagents, media, and samples in just about every laboratory in every market where samples need warming and a steady temperature. Made of 22 gauge steel with powder coated exterior for both scratch and stain resistance. All units include a pocket size digital laboratory timer, by Boeckel Scientific.

- Chamber Volume: 0.5 cu. ft.
- Dimensions: 11.625" (W) x 15.5" (H) x 15.5" (D)
- Weight: 24 lbs.
- Electrical: 115 volt/60 Hz
- Temperature Range: Ambient +10 °C to 90 °C
- 1 shelf included

Each..... 138000



Cat. no. 138000

- Chamber Volume: 1.4 cu. ft.
- Dimensions: 15.125" (W) x 19.5" (H) x 19" (D)
- Weight: 36 lbs.
- Electrical: 115 volt/60 Hz
- Temperature Range: Ambient +10 °C to 90 °C
- 2 shelves included

Each.....138200

- Chamber Volume: 2.5 cu. ft.
- Dimensions: 19.125" (W) x 21" (H) x 23" (D)
- Weight: 45.5 lbs.
- Electrical: 115 volt/60 Hz
- Temperature Range: Ambient +10 °C to 90 °C
- 2 shelves included

Each.....138325



Cat. no. 138200



Cat. no. 133000

### Economy Digital Incubator, LCD, 0.8 cu. ft.

Ideal for small laboratories and as a backup incubator for hospitals. Ideal under a low hanging cabinet or shelf, by Boekel Scientific.

- Metal door with a magnetic latch
- LCD digital temperature display that is easily seen throughout the lab
- Dimensions: 13" (W) x 16.25" (H) x 14" (D)
- Weight: 22 lbs.
- Electrical: 115 volt/60 Hz
- Temperature Range: Ambient +5 °C to 60 °C
- Solid door, 2 shelves

Each..... 133000

## Small Incubators

### Mini Incubator

by Globe Scientific

- Provides even heating and uniformity using wrap-around heating elements
- Heating and temperature stability maintained by hydraulic thermostat
- Thermometer port is built into the top
- Large plexiglass viewing area in door
- Easy to clean shelves can be placed at two levels within the chamber
- Corrosion resistant interior
- Accommodates up to 48 petri dishes or 28 standard 96 well plates
- One year warranty from manufacturer
- Dimensions: 11.2" (W) x 13" (H) x 11" (D)
- Weight: 18.4 lbs.
- Temperature Range: Ambient +65 °C to 380 °C

Each..... 505GS



Cat. no. 505GS

### Mini Incubator, Rear Heated

A small incubator with a heating element located behind the back panel to reduce the risk of over-heating samples placed on the incubator floor, by Boekel Scientific.

- Smoked acrylic door
- Gray Kydex® outer body and aluminum interior for easy cleaning
- Flat plastic Digitemp™ strip attached to interior floor for temperature indication
- Dimensions: 7.75" (W) x 6.25" (H) x 7.25" (D)
- Weight: 8 lbs.
- Temperature Range: Ambient +5 °C to 42 °C.

Each.....260700



Cat. no. 260700

## Hot Plates

### Hot Plate, Low Profile

The low profile and small diameter heating surface yields efficient heat in a compact footprint, by Thermolyne.

- Operating temperature range is 38 - 371 °C
- Heating surface diameter, 3.56", overall dimensions 3.75" (H) x 4.5" (D)
- Perforated stainless steel case allows circulating air to protect controls and counter top from excess heat
- Adjustable thermostatic temperature control
- Recommended for use with glass vessels

Each.....HP2305B



Cat. no. HP2305B

**Hot Plate, Stirrer, Magnetic**

Offers the benefit of having two separate machines in one unit. Small, space-efficient design, makes it ideal for use on crowded benchtops and underneath bio-hoods, by Globe Scientific.

- Advanced microprocessor controls with convenient turn knobs provide quick, precise adjustment and maintenance of speed and temperature
- Safety indicator LED on front panel indicates when heating and/or stirring functions have been activated
- Speed Range: 60 - 1500 RPM
- Temperature Range: 65 °C to 380 °C
- Platform dimensions: 7.5" x 7.5" (19cm x 19cm)
- Footprint dimensions: 8" (W) x 4.5" (H) x 9" (D)

Hot Plate, Each .....	508
Stainless steel rod stand, 300mm, Each .....	508S
Teflon-coated magnetic stir bar, 25mm, Each.....	508B



Cat. no. 508

**Hot Plate, Stirrer, Magnetic Digital**

Low profile and compact hot plate has ability to heat and stir simultaneously, or perform each function separately, by C & A Scientific.

- Can carry out precise stable stirring of liquid, even at high speeds
- Comes with temperature probe
- LED display can manually switch between set temperature and actual temperature
- Temperature Range: Room temperature - 300 °C
- Stirring speed up to 2,000 RPM
- 6" diameter working surface
- Overall size 11" x 6.3" x 4"

Each.....	881
Teflon-coated magnetic stir bar, 25mm, Each.....	508B



Cat. no. 881

**Label Guns**

**Label Gun**

Prints up to 8 characters on one line. Ideal for labeling supplies with receive dates, lot numbers, or expiration dates! "Snap-In" ink roller system. Simplest, easy-to-use labeler available today. Improves productivity, price marking, part numbering, and date code capability, by Monarch Marking Systems.

- Easy loading with drop-in label rolls
- Prints and dispenses labels
- 2,500 labels/roll for fewer loading/less downtime
- See when labels are low with built in viewing "windows"

8 character, hand-held, Each.....	113102
Ink roller replacement, Each .....	11828001
Labels blank, 2,500/roll, Each.....	FG112
Labels, marked "Received," 2,500/roll, Each .....	FG1131



Cat. no. 113102



Cat. no. 11828001



Cat. no. 17113LG

## Lamps

### Lamp, Fluorescent, with Magnifier

Designed for visual accuracy and precise viewing. The lightest touch glides the light to any needed position without any tightening devices, by Luxo.

- Complete with a magnifier and clamp for mounting on a horizontal surface
- Three 5" diameter, diopter, biconvex ground glass lens, mounted on two spring balanced arms with reach ranging from 25" to 45"
- Strong, die-cast aluminum shade
- Includes one 22W Circline fluorescent lamp
- Equipped with an "instant on" switch; no "hold down" required to turn the light on
- 115V, 60Hz, UL

Each..... 17113LG



Cat. no. UVL56

### UV Lamp, Long Wave, Hand Held

This ultraviolet lamp by UVP has a powerful 6 watt bulb for easier, more reliable detection than weaker models. Can be used for ALA, MUG, and fluorescent pigment detection in microbiology, by UVP.

- Wavelength: 365nm
- Intensity: 1,350µW/cm<sup>2</sup> at 3" (7.6cm)
- 6 Watt

Each..... UVL56

## Masticators / Homogenizers

### BagMixer™ 100 MiniMix™ Laboratory Paddle Blender

Ideal for medical, veterinary, and microbiological analyses. The unit features a digital screen and window door. Easily control speed and time of blending in the MiniMix™. Quickly obtain ready-to-analyze samples, with no risk of cross-contamination, by Interscience Laboratories.

- Capacity 5ml - 100ml
- Variable blending speed (1 - 4 strokes per second)
- Variable blending time (10 - 360 seconds or open running)
- Silent operation
- Easy-to-use
- Cleans easily
- Optimal extraction
- Window door and shock absorbers lifetime guaranteed
- Stainless steel construction
- Door opens to 270°

Each.....100WCC



Cat. no. 100WCC

### BagMixer™ Specimen Paddle Blender

A specimen masticator for blending and filtering solid samples for microbiological analyses. The BagMixer™ lab blender line ensures quick and sterile blending of all samples, while being quiet and easy to use, by Interscience Laboratories.

- Isolates all microbial flora contained in and on the surface of a solid sample
- Fitted with an adjustable paddle system to reduce preparation time
- Adjust the gap between paddles and door to adapt blender to sample
- Compact, stainless steel construction, with an unbreakable window door
- Lifetime guaranteed shock absorbers
- Equipped with a drip tray to catch leaks

**50 - 400ml volume**, variable blending speed 1 - 4 strokes per second, adjustable blending time (1sec. - 1hr., infinite or countdown), size 38.5cm x 27cm x 26cm.

Each..... 400VW



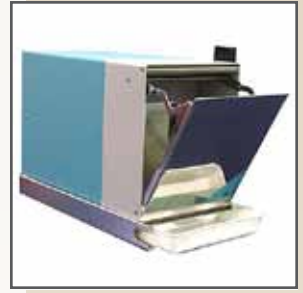
Cat. no. 400VW

### Whirl-Pak® Masticator™ Homogenizer Blender

Because the Masticator™ has no direct contact with the sample, no cross-contamination can occur, no sterilization of the equipment is required, and no cleanup is necessary, by Nasco.

- Unit starts automatically when the door is closed
- Timer adjustable from 15 - 90 seconds or operates continuously
- Paddles work at 10 strokes per second, suitable for most applications
- Stainless steel compartment, hinged door removes easily for cleaning
- Maintenance-free, self-lubricating parts
- Blends samples from 80 - 400ml
- Manufacturer three-year warranty on all mechanical parts

Each..... B01420WA



Cat. no. B01420WA

### Whirl-Pak® Plain Paddle Blender Bags

Plain sterile bag for use in all types of homogenizer blenders, by Nasco.

- Dimensions: 7.5" x 12" (19cm x 30cm), 3.0 mil (0.076mm thick)
- Made from blended polyethylene

1,000/bx..... B01421WA

## Microscopes

### Microscope, Compound Binocular

For lab use in today's clinical and research settings. Provides five objectives and interchangeable condenser system which applies to bright field, phase contrast, dark field and polarized light techniques. Lower position of mechanical stage knob offers comfort for extended use, by C & A Scientific.

- 30° binocular Seidentopf head, rotatable 360°
- Pair of 10X widefield eyepieces, interpupillary distance adjustment 55 - 75mm
- DIN Objectives: Achromatic parfocal and parcentered, backward mounted: 4X (N.A. 0.10), 10X (N.A. 0.25), 40X (N.A. 0.65), 60X (N.A. 0.90), 100X (N.A. 1.25)
- Magnification: 40X to 1,000X
- Focusing stop to protect objectives and slides from damage
- 140mm x 135mm graduated mechanical stage (range of travel 40mm x 80mm) with lower knobs of coaxial drive
- Spring-loaded slide holder
- Abbe condenser NA 1.25 with rack and pinion adjustment
- Iris diaphragm with blue filter
- Field diaphragm offers more light control
- Coaxial coarse and fine focusing tension controls
- Variable intensity halogen illuminator, 6V 20W, wide range voltage transformer for international markets, 90V to 240V
- Spare bulb, fuse, immersion oil, dust cover
- Dimensions: 10" x 8" x 16.5" (H)
- Weight: N. W. 11 lbs.
- CE Certified

Each.....MRP5000



Cat. no. MRP5000

360° Rotating Head



Cat. no. MRP3000

### Microscope, Compound Binocular, Professional

A professional binocular microscope that incorporates all the best features of a quality laboratory instrument. The objectives face backwards for more space and the base has a comfortable plastic plating over the metal for less heat conduction. The field diaphragm adjustment built into the illuminator offers Koehler illumination for more lighting control options, by C & A Scientific.

- 30° binocular Seidentopf head, rotatable 360°
- Pair of 10X widefield eyepieces, interpupillary distance adjustment 55 - 75mm
- DIN Objectives: Achromatic parfocal and parcentered, backward mounted: 4X (N.A. 0.10), 10X (N.A. 0.25), 40X (N.A. 0.65), 100X (N.A. 1.25)
- Magnification: 40X to 1,000X
- Focusing stop to protect objectives and slides from damage
- 140mm x 135mm graduated mechanical stage (range of travel 45 x 80mm) with lower knobs of coaxial drive
- Spring-loaded slide holder
- Abbe condenser NA 1.25 with rack and pinion adjustment
- Iris diaphragm with blue filter
- Field diaphragm offers more light control
- Coaxial coarse and fine focusing tension controls
- Variable intensity halogen illuminator, 6V 20W, wide range voltage transformer for international markets, 90V to 240V
- Spare bulb, fuse, immersion oil
- Dimensions: 7" x 9" x 15" (H)
- Weight: N. W. 13.75 lbs.
- CE Certified

Each.....MRP3000



Cat. no. 1113AMH

### Microscope, Compound, Binocular, Intermediate Level

An excellent choice for schools, veterinarians, and industrial applications. Five year warranty on mechanical defects, one year on electrical defects, by VanGuard®.

- Viewing Head: Rotates 360° and is inclined at 45°. Features dioptic (-5 to +5) and interpupillary adjustment (53 - 72mm) mechanisms
- Eyepieces: 10X widefield with 18mm field diameter
- Nosepiece: Quadruple with positive stops
- DIN Objectives: Achromatic 4X (N.A. 0.10), 10X (N.A. 0.25), 40X (N.A. 0.65), 100X (N.A. 1.25) brightfield objectives
- Stage: Graduated, integrated mechanical stage (120 x 120mm); left-hand coaxial drop-down X-Y controls; 25 x 60mm movable range
- Focusing Movement: Separate coarse and fine focus controls feature a slip-clutch mechanism which protects the gears from damage by allowing the knobs to turn even when the stage has reached the upper/lower travel stops; also includes a tension control mechanism
- Abbe Condenser: N.A. 1.25 with iris diaphragm and swing-in filter holder; can be focused with a forward-positioned lever
- Illumination: 20W variable halogen light source. Comes with blue and clear density filters. 0.5A, 250V fuse
- Base: Stable 195 x 150mm base fitted with anti-skid rubber feet
- Body: Cast-metal body with stain-resistant enamel finish
- Dimensions: 195 x 150 x 370mm
- Weight: 4.9kg (11 lbs.)

Each.....1113AMH

### Microscope, Compound, Binocular, Professional Level

Combining top performance with highly advanced features and optics, the 1400 series models produce images of the utmost in clarity. Features plan achromatic lenses for minimal distortion and superb clarity. Five year warranty on manufacturing defects (one year for electrical components), by VanGuard®.

- Viewing Head: Rotates 360° with 30° inclined eye tubes. Features dioptic (-6 to +6) and interpupillary adjustment (55 - 75mm) mechanisms.
- Eyepieces: 10X widefield with 20mm field diameter
- Nosepiece: Extra-large, ball bearing nosepiece with a wide, knurled grip for easy operation. Features high-grade lubricant
- Phase contrast model: Quintuple, reversed
- Brightfield model: Quadruple, reversed
- DIN Objectives: Plan achromatic
- Stage: Delivering a high level of fluid motion control and longevity, the stage measures 160 x 140mm, featuring a removable spring-clip slideholder and a chemical-resistant finish. Motion is controlled with a right-hand, drop-down, rack and pinion coaxial control.
- Focusing Movement: Coaxial, ultra low-position coarse and fine focus controls. Graduated to two microns per division; 40mm focusing range with safety up stop feature
- Condenser: Mounted in a rack and pinion focusing mechanism; spring-loaded centering knobs; iris diaphragm; swing-in filter holder
- Phase contrast model: Zernike N.A. 1.25
- Brightfield model: Abbe N.A. 1.25 Zero setting
- Transmitted Illumination: 20W variable quartz halogen light source
- Base: Stable 260 x 170mm design is fitted with anti-skid rubber feet
- Body: Cast metal, ergonomic body with stain-resistant enamel finish
- Dimensions: 380 x 220 x 425mm
- Weight: 9.3kg (20 lbs.)

**Brightfield model** 4X (N.A. 0.10), 10X (N.A. 0.25), 40X (N.A. 0.65), 100X (N.A. 1.25), Each..... 1421BRI

**Phase Contrast model** 10X (N.A. 0.25), 25X (N.A. 0.40), 40X (N.A. 0.65), 100X (N.A. 1.25), Each..... 1423PH



Cat. no. 1421BRI



Cat. no. 1423PH

### Microscope, Compound, Binocular, Research Level

Ideally suited for clinical, industrial, and educational applications. Advanced features, precision optics, and an exceptionally durable design make these instruments an unparalleled value. Five year warranty on mechanical defects, one year on electrical defects, by VanGuard®.

- Viewing Head: Seidentopf head binocular; 30° inclination; 360° rotatable head; diopter (-5 to +5) and interpupillary adjustment (55 - 75mm) mechanisms; erect imaging; multiple-coated transmission prism systems
- Eyepieces: 10X widefield
- Nosepiece: Quadruple, reversed, extra-large, ball bearing nosepiece with wide, knurled grip for easy operation; features high-grade lubricant and positive stops
- DIN Objectives: Achromatic or plan 4X (N.A. 0.10), 10X (N.A. 0.25), 40X (N.A. 0.65), 100X (N.A. 1.25)
- Stage: Graduated integrated mechanical stage (160mm x 140mm), right-hand coaxial drop-down X-Y controls, and 75mm x 50mm coarse and fine focus controls; graduated two microns per division, fitted with tension adjustment and safety auto stop, and 40mm focusing range
- Condenser: N.A. 1.25 Abbe condenser with iris diaphragm, easily centered with spring-loaded knobs, can be adjusted to focus with rack and pinion substage, and swing-in filter holder
- Base: Stable 180 x 210mm base, fitted with anti-skid rubber feet
- Body: Cast metal, ergonomic body, black hand rests, and stain-resistant enamel finish



Cat. no. 1220CM

*Continued on next page*

### Microscope, Compound, Binocular, Research Level *continued*

- Illumination: 6V/20W variable, quartz halogen light source, supplied with blue and neutral density filters
- Dimensions: 210 x 180 x 380mm
- Weight: 7kg (15.5 lbs.)

#### Achromatic model

Each.....1220CM

#### Plan achromatic model, superior optics for increased clarity

Each.....1221CM



Cat. no. 1101EML

### Microscope, Compound, Monocular, Elementary Level

An excellent instrument for the introduction to elementary microscopy, by VanGuard®.

- Viewing Head: Rotates 360° and is inclined at 45°.
- Eyepiece: Locked-on 10X widefield (DIN)
- Nosepiece: Triple with positive stops
- DIN Objectives: Achromatic 4X (N.A. 0.10), 10X (N.A. 0.25), 40X (N.A. 0.60)
- Stage: 90 x 90mm with locked-on, spring-loaded stage clips
- Focusing Movement: Coarse focus controls featuring a slip-clutch mechanism which protects the gears from damage by allowing the knobs to turn even when the stage has reached the upper/lower travel stops
- Condenser: N.A. 0.65 with 6-position disc diaphragm
- Illumination: LED
- Base: Stable 155 x 110mm base fitted with anti-skid rubber feet
- Body: Cast-metal body with stain-resistant enamel finish
- Dimensions: 155 x 110 x 305mm
- Weight: 1.8kg (4 lbs.)
- Warranty: Five year optical/mechanical, one year electrical

Each..... 1254SL

### Microscope, Compound Monocular, Research Medical

Reliable research microscope. Ball bearing movements in focusing and stage systems for durability, reliability and accuracy, by C & A Scientific.

- 45° inclined head, rotatable 360°
- Single 10X widefield eyepiece
- DIN Objectives: 4X (N.A. 0.10), 10X (N.A. 0.25), 40X (N.A. 0.65), 100X (N.A. 1.25)
- Magnifications: 40X to 1,000X
- Stage: 120 x 125mm mechanical stage with coaxial drive/rack and pinion adjustment, left hand controls
- Condenser: Abbe condenser NA 1.25 with iris diaphragm and additional blue filter
- Coaxial coarse and fine focusing low knob stage positioning
- Built-in variable intensity 6V 20W halogen illuminator UL approved, 3 wire cord
- Spare bulb, fuse, and immersion oil included
- Dimensions: 6.5" x 8.25" x 15"
- Weight: 4.7kg (10.5 lbs.)

Each..... MRJ01



Cat. no. MRJ01

### Microscope, Compound Monocular, Student

Student use microscope, by C & A Scientific.

- DIN Objectives: 4X (N.A. 0.10), 10X (N.A. 0.25), 40X (N.A. 0.65), 100X (N.A. 1.25)
- 45° inclined monocular head, rotatable 360°
- Lock-on widefield 10X eyepiece with scale pointer
- DIN Objectives: Achromatic parfocal and parcentered objectives 4X (N.A. 0.10), 10X (N.A. 0.25), 40X (N.A. 0.65)
- Total magnification from 40X to 400X
- Rotatable nosepiece with positive click stops
- 6 hole disc diaphragm
- Built-in illuminator base with 115V 20W tungsten lamp
- 3 wire cord UL approved
- All metal frame with durable enamel finish
- Size: 5" x 7" x 12.5"
- Weight: 3.1kg (7 lbs.)

Each.....MS01



Cat. no. MS01

### Microscope, Compound Fluorescent, Trinocular, Research Level

Features both transmitted and reflected illumination and is perfect for brightfield and fluorescence applications. Advanced features, precision optics, and an exceptionally durable design make this instrument an unparalleled value. Five year warranty on mechanical defects, one year on electrical defects, by VanGuard®.

- Viewing Head: Seidentopf trinocular head, large vertical ocular for photo and video microscopy. Slide-out main prism facilitates maximum light transmission to the vertical ocular; two slide-in filter cubes move into the light path independently for simple operation and crucial flexibility, 30° inclination, 360° rotatable head, diopter (-5 to +5) and interpupillary adjustment (55 - 75mm) mechanisms, erect imaging, and multiple-coated transmission prism
- Eyepieces: 10X widefield eyepieces
- Nosepiece: Quadruple, reversed, extra-large, ball bearing nosepiece with wide, knurled grip for easy operations, features high-grade lubricant and positive stops
- DIN Objectives: Plan achromatic 4X (N.A. 0.10), 10X (N.A. 0.25), 20X (N.A. 0.40), 40X (N.A. 0.60), 100X (N.A. 1.25)
- Stage: Graduated integrated mechanical stage (160 x 140mm), right-hand coaxial drop-down X-Y controls, and 75 x 50mm movable range
- Focusing Movement: Coaxial, low-position coarse and fine focus controls; graduated to two microns per division, fitted with tension adjustment and safety auto-stop, and 40mm focusing range
- Condenser: N.A. 1.25 Abbe condenser with iris diaphragm, easily centered with spring-loaded knobs, can be adjusted to focus with rack and pinion mechanism, and swing-in filter holder. Epi-Fluorescence
- Illumination System: Condenser, iris diaphragm, neutral density filter wheel, and polarizing filter
- Base: Stable 250 x 200mm base, fitted with anti-skid rubber feet
- Body: Cast metal, ergonomic body, black hand rests, and stain-resistant enamel finish
- Reflected Illumination: 100W HBO mercury light source, mounted to the rear, protected by a sturdy, all-metal housing, lamp can be adjusted to focus and centered, stable, and external power supply for constant, even light
- Transmitted Illumination: 6V/20W variable, quartz halogen light source, supplied with blue, and neutral density filters.
- Dimensions: 250 x 200 x 435mm
- Weight: 8.8kg (19 lbs.)
- Brightfield and fluorescence, plan achromatic

Each.....1282ECM



Cat. no. 1282ECM



Cat. no. 1291CMI

### Microscope, Inverted, Trinocular, Research Level

Ideal for observation of cultures or specimens within well plates, petri plates, vials, or any other application requiring the need for long working distance. Advanced features, precision optics, and an exceptionally durable design make these instruments an unparalleled value. Five year warranty on manufacturing defects, by VanGuard®.

- Viewing Head: Seidentopf trinocular head, 30° inclination, 360° rotatable head, diopter (-5 to +5) and interpupillary adjustment (55 - 75mm) mechanisms, erect imaging, and multiple-coated transmission prism system
- Eyepieces: 10X widefield eyepieces with 18mm field diameter
- Nosepiece: Quadruple, extra-large, ball bearing nosepiece with wide, knurled grip for easy operation, features high-grade lubricant and positive stops
- DIN Objectives: Brightfield, plan achromatic 10X (N.A. 0.25), 25X (N.A. 0.40), 40X (N.A. 0.65)
- Stage: Graduated integrated mechanical stage (200 x 150mm); right-hand coaxial drop-down X-Y controls, and 30 x 70mm movable range
- Focusing Movement: Coaxial, low-position coarse and fine focus controls; graduated to two microns per division; fitted with tension adjustment and safety autostop, and 40mm focusing range
- Condenser (Standard): N.A. 0.40 long working distance (30mm) condenser with iris diaphragm, easily centered with spring-loaded knobs, can be adjusted to focus with rack and pinion mechanism, and swing-in filter holder
- Condenser (Optional): N.A. 0.10 super long working distance (70mm) condenser with iris diaphragm, easily centered with spring-loaded knobs, can be adjusted to focus with rack and pinion mechanism, and swing-in filter holder
- Base: Stable 330 x 205mm base; fitted with anti-skid rubber feet
- Body: Cast metal, ergonomic body, and stain-resistant enamel finish
- Illumination: Overhead 6V/20W variable, quartz halogen light source, supplied with blue and neutral density filters
- Dimensions: 330 x 205 x 435mm
- Weight: 9.7kg (21 lbs.)



Cat. no. 1491INIMODS

Each..... 1291CMI

For TB MODS Testing, 4X and 10X plan fluorite objective, 30W halogen, 110V,  
Each..... 1491INIMODS

For TB MODS Testing, 4X and 10X plan fluorite objective, 30W halogen, 220V,  
Each..... 1491INIMODS220

### Microscope, Stereo, Binocular, Research Level

Ideal for the clinical, industrial, or educational setting. The precision optics produces high-resolution, three-dimensional images at 10X to 40X magnification. Five year warranty on manufacturing defects, by VanGuard®.

- Viewing Head: Binocular, 45° inclination, 360° rotatable head, diopter (-5 to +5) and interpupillary adjustment (51 - 77mm) mechanisms, 9mm (20X), 5.5mm (40X) field of view and a 102mm long working distance
- Eyepieces: 10X widefield stereo eyepieces with 20mm field diameter
- Optics: Dual power (1X and 2X, 1X and 3X, 2X and 4X, and 1X and 4X models available), revolving turret objectives, parfocal and parcentered
- Focusing Movement: Coaxial, rack and pinion focusing controls, tension control mechanism to prevent drifting, and slip-clutch mechanism for gear protection
- Base: Stable 245 x 205mm base; fitted with anti-skid rubber feet
- Stage Plate: Frosted glass stage plate and black/white reversible stage plate
- Body: Cast metal, ergonomic body and stain-resistant enamel finish
- Illumination Switch: Three-way illumination switch allows the upper and lower illumination to be on separately or simultaneously
- Upper and Lower Illumination: LED
- Dimensions: 305 x 220 x 400mm
- Weight: 5.5kg (12 lbs.)



Cat. no. 1254SL

Each.....1254SL

### Microscope, Stereo, Zoom, Binocular, Research Level

Ideal for the clinical, industrial, or educational setting. The adjustable precision optics produce high-resolution, three-dimensional images that zoom from 7X to 45X. Five year warranty on manufacturing defects, by VanGuard®.

- Viewing Head: Binocular or trinocular, 45° inclination, 360° rotatable head, diopter (-5 to +5) diopter and interpupillary adjustment (55 - 90mm) mechanism, large field of view, and a 93mm long working distance.
- Eyepieces: 10X widefield eyepieces with 20mm field number
- Optics: Stereo zoom produces a standard nominal total magnification range of 7X to 45X with a field of view 28.5 to 4.4mm; smooth-turning, dual, and side-mounted zoom controls
- Focusing Movement: Coaxial, rack and pinion focusing controls; tension control mechanism to prevent drifting, slip-clutch mechanism for gear protection, and 85mm vertical travel
- Base: Stable 255 x 180mm base, fitted with anti-skid rubber feet
- Stage Plate: Frosted glass stage plate and black/white reversible stage plate
- Body: Cast metal, ergonomic body, and stain-resistant enamel finish
- Upper and Lower Illumination: 6V/15W variable, quartz halogen light source
- Dimensions: 225 x 180 x 430mm
- Weight: 7.7kg (17 lbs.)

Each.....1273ZH



Cat. no. 1273ZH

## Microscopes Supplies

See General Lab Supplies

## Nutating Mixers

### Nutating Mixer 3D Tube Rotator

These versatile mixers are designed for thorough, foam-free mixing in tubes, by Globe Scientific.

- Two platform sizes available
- Autoclavable dimpled mat to hold tubes in place
- Maintenance free brushless motors
- Speed: 24 RPM
- Operating Temperature: +4 °C to 65 °C

Each..... 520GS



Cat. no. 520GS

## Petri Plate Filler

### Petri Swiss Agar Filler

Designed for the laboratory that needs a compact and flexible filling unit, by Biotool Swiss.

- No need for manual stacking, fills 1-20 dishes directly in the petri rack
- Ideal for pouring small or special agar batches
- Uses beveled edge/automation plates
- Pump delivery rate of 800ml/min
- Fill rate of 20 dishes/1.5min (15ml)
- UV light source at pouring area
- Smoother agar plates using dual head pump
- Repels prevented by anti-drop mechanism
- Ergonomic design for easy access during cleaning
- Does not rotate
- Does not include media sterilizer
- Dimensions: 20" x 24" x 12"

Each.....80000NG



Cat. no. 80000NG



Cat. no. XH400

## Scales

### Scale, Digital, Battery Powered

by C & A Scientific

- Equipped with a high-precision sensor, large LCD display and easy-touch buttons
- Can be used in the kitchen, office, or laboratory
- Auto zero-reset and power-off functions
- Displays weight in grams or ounces
- Display includes low battery indicator and error on overload
- Capacity: 1,000gm (35 oz)
- Uses 2 AA batteries (not included)
- Platform diameter: 5.75"

Each..... XH400



Cat. no. ML601E

### Scale, Digital, AC and Battery Powered

by Mettler Toledo

- Equipped with high-performance Strain Gauge weighing cell
- Connects to PC via RS232 slot for transfer of weighing results
- Brilliant backlit display
- Easy-to-use application programs built-in
- Below weighing hook for weighing below the balance
- Overload protection
- Built in Date and Time function
- Programmable 1 Smart Key for shortcut access to application
- Weighing in 16 different weighing units
- Full independence from power supply for 8 hours
- Balance dimensions 290 (L) x 184 (W) x 84 (H) mm

Each.....ML601E



Cat. no. 5301

## Stainers

### Poly Stainer

A programmable microbiology and histology staining instrument, the Poly Stainer, will significantly reduce bench time, by Neutec Group, Inc.

- Ideal for gram stains, acid fast, trichrome wrights, reticulocyte, or bone marrow stains
- Constant rinse cycle eliminates cross contamination, produces a standardized, clear-stained film
- Suitable for batch or stat operation
- Memory up to 10 programs, each with 10 different positions
- Increases productivity and standardizes process
- Dimensions: 27.5" (W) x 17.3" (H) x 15.7" (D)

Each..... 5301



Cat. no. 40055

## Stop Watches and Timers

### Timer, Single channel, Digital

by West Bend

- Large easy to read numbers
- Counts up to and from 100 hours
- Magnetic belt clip with folding easel feature
- One AAA battery included

Each ..... 40055

# Thermometers

## Exact-Temp Digital Thermometer

by Thermco

- Thermometer probe stays inside, digital display stays outside. No need to open the door!
- Temperature probe remains in plastic bottle with insulating liquid
- Thermometer is traceable to National Institute of Standards and Technology (NIST) with certificate
- Min/Max alarm settings with nine foot sensor cable.
- Celsius and Fahrenheit ranging from -50° to 70 °C (-58 to 158 °F)
- Accurate up to  $\pm 0.6$  °C for precise measurements
- Resolution: 0.1 °C. Display size is 1.75" x 0.75" for easy viewing
- Powered by one AAA battery (included)

Freezer Thermometer, -20 °C certified, Each .....F80301

Incubator Thermometer, 37 °C certified, Each .....I80301

Refrigerator Thermometer, 4 °C certified, Each.....R80301

## Accu-SAFE™ Enclosed Chamber Bottle Thermometer

by Thermco

- Red mineral spirit, alcohol-filled, teflon-coated thermometer for the incubator
- Division 0.5 °C
- Total immersion
- Bottle contains 30ml of 50% ethylene glycol
- Contains no hazardous mercury
- Extremely accurate, traceable to NIST, and supplied with a certificate
- Double magnets allow thermometer to be attached to side wall or door of a chamber

18° to 50 °C, 135mm length, for incubators, Each.....I03015

-5° to 15 °C, 125mm length, for refrigerators, Each .....R02015

# Tissue Grinders

## Tissue Grinder, Disposable

by Sage

- Ready-to-use in sterile peel pouch
- Faster and more consistent grinding due to new grinding surface each use
- Specimen can be cooled during grinding
- Grinder tube doubles as specimen container for transportation and storage
- Anti-aerosol sleeve prevents dangerous aerosolization of specimen
- Rigid plastic does not break
- Complete with 15ml tube

10/pk ..... 15704126



Cat. no. F80301



Cat. no. R02015



Cat. no. 15704126



Cat. no. M37615

## Vortex Mixers

### Vortex Mixer, Maxi Mixer™ II

Use with all shapes of test tubes, beakers, flasks and other containers. Ideal for mixing small volumes, preparing liquid emulsions, dissolving solids, and mixing liquids of different densities. Can be used to perform enzymatic and RIA or biochemical assays, to vortex cell suspensions, mix tissue samples, and for general test tube mixing, by Labline.

- Compact design conserves valuable bench top space
- Neoprene mixing head can accommodate two or more tubes simultaneously, square or odd shaped tubes and flasks
- Smooth stepless control from gentle to vigorous mixing action
- Chemically resistant, easy-to-clean body construction
- Four non-skid rubber feet contribute to stability
- Pressure-activated mixing head (can also be set for continuous action)
- Comes with a 24-month warranty by manufacturer
- Dimensions: 6.25" (W) x 4" (H) x 5.1" (D)
- Operating speed up to 3,000 RPM

Each.....M37615



Cat. no. 500

### Vortex Mixer

Provides a smooth instant vortexing of even the largest sample sizes, including 50ml tubes, by Globe Scientific.

- Unique counter balance system creates maximum vortexing action
- Pressure-activated or continuous operation
- Dimensions: 5" (W) x 6.7" (H) x 6.3" (D)
- Variable speed control from 200 to 3,200 RPM

Each.....500



Cat. no. 58816121

### Vortex Mixer

Designed for gentle shaking or vigorous vortexing of samples in a wide variety of applications.

- Use with flasks, beakers, tubes, and even microwell plates
- Constructed using a heavy base casting with corrosion-resistant enamel finish
- Four rubber feet ensure unit remains stable on work surfaces
- Pressure-activated or continuous operation

100 - 3,200 RPM, Each ..... 58816121

500 - 3,000 RPM, Each ..... 14005824

Insert Retainer, Each ..... 58816132

Tube Holder, 14–19mm, for 15ml centrifuge tubes, 2/pk ..... 58816140



Cat. no. F202A1075

### Wizard™ Vortex Mixer

by Neutec Group, Inc

- Ergonomically friendly, reduces work load
- Resistant to water and chemicals
- Rotates up to 3,000 RPM
- Orbital shaking motion, load capacity of 1.1 lbs.
- Variable analog speed setting
- Infrared (IR) system detection automatically activates vibration
- Dimensions: 7.09" x 8.66" x 2.56"

Each.....F202A1075

# Water Baths

## Water Bath, General Purpose, Digital

The "Hot Tub" general purpose water bath offers a variety of sizes and is ideal for general lab applications, by Boekel Scientific.

- Space saving design allows for the most efficient use of bench space
- Digital controller makes for easy temperature selection, rapid heat-up
- Water bath can also be used as a boiling bath by setting the temperature to boiling mode (with lid)
- Temperature range: ambient +5 °C to 100 °C or boiling mode
- Overall dimensions: 13.25" (W) x 9.88" (H) x 8.25" (D)
- Tank dimensions: 11.75" (W) x 5.5" (H) x 6" (D)
- Weight: 14 lbs.

Each..... 290100

- Overall dimensions: 13.25" (W) x 9.63" (H) x 15.13" (D)
- Tank dimensions: 11.75" (W) x 5.75" (H) x 12.75" (D)
- Weight: 22 lbs.

Each..... 290200

- Overall dimensions: 13.25" (W) x 11.63" (H) x 22.13" (D)
- Tank dimensions: 11.75" (W) x 7.5" (H) x 20" (D)
- Weight: 31 lbs.

Each..... 290300



Cat. no. 290100



Cat. no. 290200



Cat. no. 290300

## Water Bath, Mini

by Globe Scientific

- 6 liter
- Stainless steel cover and thermometer clip
- One year warranty from manufacturer
- Temperature range: ambient +5 °C to 100 °C
- Dimensions: 14" (W) x 13" (H) x 11" (D)
- Tank dimensions: 12.6" (W) x 6.9" (H) x 6.7" (D)
- Weight: 17 lbs

Each..... 510GS

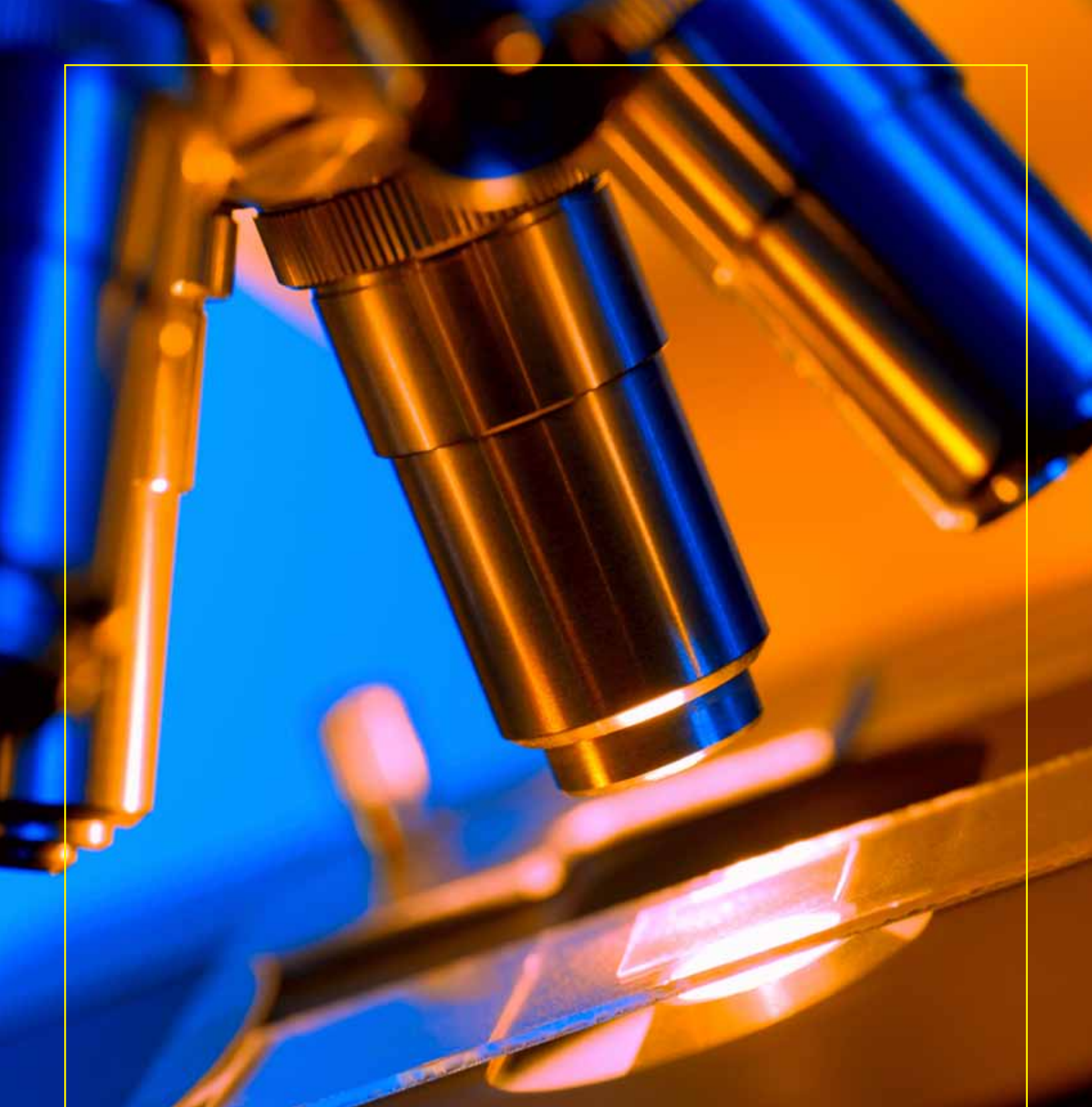


Cat. no. 510GS









800.266.2222  
805.346.2760 (fax)  
[www.HardyDiagnostics.com](http://www.HardyDiagnostics.com)  
[Sales@HardyDiagnostics.com](mailto:Sales@HardyDiagnostics.com)



The Quality Management System at Hardy Diagnostics manufacturing facility is certified to ISO 13485.

ISO 13485  
FM 572526

Santa Maria, CA | Centralia, WA | Salt Lake City, UT | Phoenix, AZ | Dallas, TX | Springboro, OH | Lake City, FL | Albany, NY