

BOX OFFICE HIT
*HUGO™ version 7 is free
 for all Hardy Diagnostics Customers!*

HUGO™ is a unique software program from Hardy Diagnostics that serves as an encyclopedia and technical manual for microbiologists. HUGO™ contains over 4,500 pages of useful information that is accessible with a search engine.

This software is offered to microbiologists as a valuable reference source. It will provide quick and easy access to important up-to-date information regarding culture media, quality control, safety, antimicrobials, agency regulations, new products, rapid methods, and other topics of interest to microbiologists.



PRODUCTION **HARDY DIAGNOSTICS**
 www.HardyDiagnostics.com
 DIRECTOR
 LOCATION 1430 West McCoy Lane, Santa Maria, CA 93455
 Dallas, TX
 Salt Lake City, UT
 Centralia, WA
 Sales@HardyDiagnostics.com
 Santa Maria, CA
 Phoenix, AZ
 Lima, OH
 phone: 800.266.2222
 fax: 805.346.2760



The Quality Management System at Hardy Diagnostics manufacturing facility is certified to ISO 13485.



A Culture of Service...



HARDY DIAGNOSTICS

WHAT'S NEW IN MEDIA?

MATINEE

CIS
Transcut

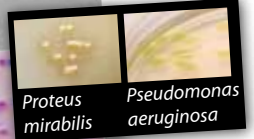
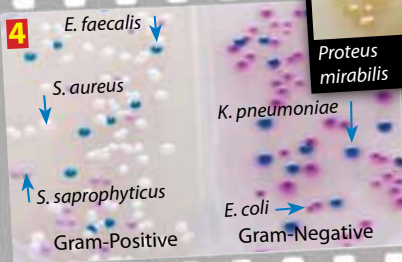
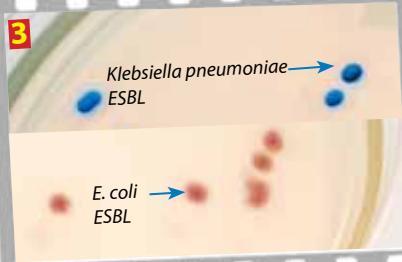
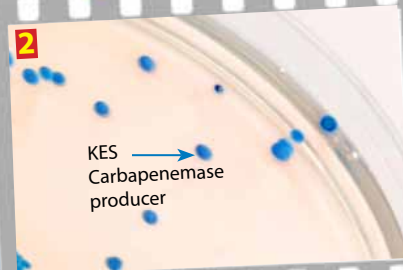
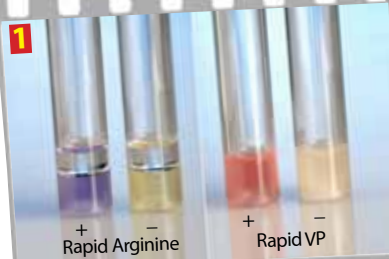
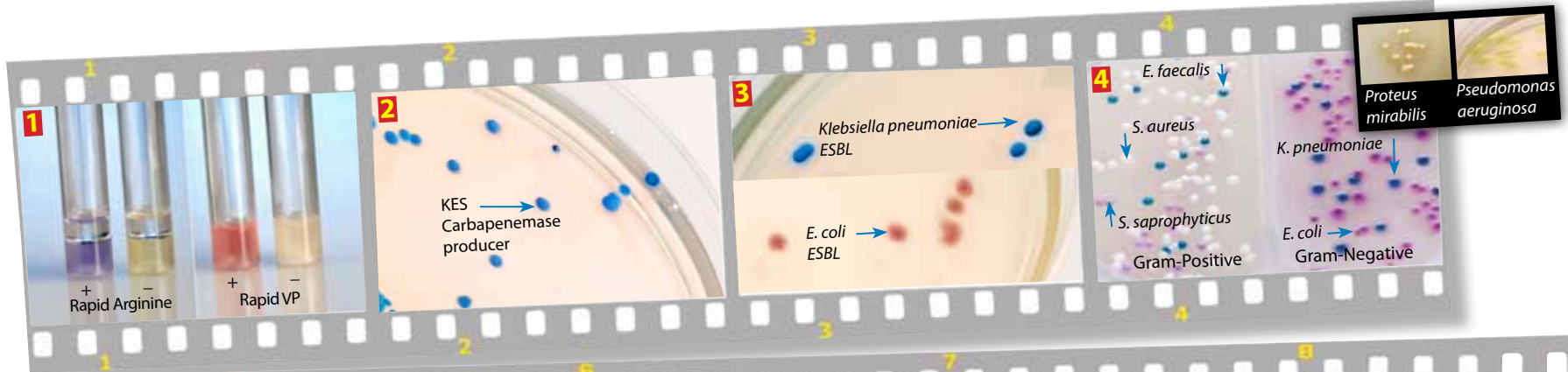
AMERICA

NOW
SHOWING



A Culture of Service...

02171011



1 Rapid Anginosis ID Kit for *S. milleri*

For the rapid identification of the *Streptococcus anginosus* group (formerly *S. milleri*) by the detection of arginine decarboxylase activity and production of acetoin. The kit contains 20 tubes total; 10 tubes of Rapid Arginine and 10 tubes of Rapid VP.

20 tubes total/pack.....**Z14**

2 HardyCHROM™ Carbapenemase

HardyCHROM™ Carbapenemase is a chromogenic medium that is selective for gram negative carbapenemase producing bacteria, which will grow on this medium with the following colors:

- KES Group** - will appear blue
- E. coli*** - will appear rose to magenta with darker pink centers.
- Proteus*** - will appear clear to light yellow with a golden halo.
- Pseudomonas*** - will appear colorless.

The ability to quickly screen for carbapenemase producing bacteria aids in implementing effective infection control within the hospital environment.

10 plates/pkg..... **G323**

3 HardyCHROM™ ESBL

HardyCHROM™ ESBL is a chromogenic medium that is selective for gram negative Extended Spectrum Beta Lactamase (ESBL) producing bacteria, which will grow on this medium with the following colors:

- KES Group** - will appear blue
- E. coli*** - will appear rose to magenta with darker pink centers.
- Proteus*** - will appear clear to light yellow with a golden halo.
- Pseudomonas*** - will appear colorless.

The ability to quickly screen for ESBL bacteria aids in implementing an effective antibiotic treatment for the patient.

10 plates/pkg.....**G321**

4 HURBi™ for Urine Cultures

HURBi™ is a chromogenic culture media that facilitates the differentiation and identification of urinary tract pathogens. HURBi™ (HardyCHROM™ Urine Biplate) is formulated to isolate gram-positive bacteria and *Candida* on the left side and gram-negative bacteria on the right side of the bi-plate.

When it comes to pathogen detection in urine cultures, it doesn't get any easier than this. HURBi™ can also be used to characterize organisms from sources other than urine. It provides a broad view of most pathogenic bacteria and is very useful in detecting mixed infections.

10 biplates/pkg..... **J100**

5 Free-Living Amebae Media

The only commercially prepared media for the detection of amebae. A dilution of *E. coli* is made using Page's Saline. The Non-nutrient agar is first inoculated with a lawn of the *E. coli*. The Non-nutrient agar is then inoculated with your specimen and observed after incubation for feeding tracks left behind by the amebae.

Page's Saline
2mls, 20/pkg.....**R225**

Non-Nutrient Agar
15x100mm plate, 10/pkg.....**G225**

Media for Stock Culture Maintenance
Acanthamoeba Broth (PYG), 5ml fill, 20/pkg.....**K225**

Naegleria Broth (Nelson's Broth) 5ml fill, 20/pkg.....**K325**

6 GBS Detect for Non-Hemolytic Strains

GBS Detect is recommended for the isolation and detection of gamma-hemolytic (non-hemolytic) group B streptococci by inducing beta-hemolysis on sheep blood agar upon subculture from enrichment broth procedures such as StrepB Carrot Broth™ and LIM Broth. GBS Detect plates contain special supplements that cause otherwise non-hemolytic strains of GBS to appear as beta-hemolytic, thus increasing the sensitivity of detection methods used to detect GBS colonization in pregnant women.

A perfect companion product to Carrot Broth™ (Cat. No. Z140) which does not detect non-hemolytic strains.

10 plates/pkg **A300**

7 Rapid Ornithine for *S. lugdunensis*

Rapid Ornithine provides a quick and easy way to screen coagulase-negative staphs for *Staphylococcus lugdunensis*.

Rapid Ornithine detects ornithine decarboxylase activity in as little as two hours. This test will assist in the identification of Enterobacteriaceae and *S. lugdunensis*.

This test represents a quick and reliable way to identify the pathogen *S. lugdunensis*, which can masquerade as a harmless coagulase-negative staph. *S. lugdunensis* is the only staph that is positive for ornithine decarboxylase.

20 tubes/pkg..... **K279**

8 Rapid Indole Broth for the HACEK Group

Rapid Indole Broth is recommended for use in the detection of weak indole production by fastidious microorganisms, especially *Haemophilus*, *Cardiobacterium*, and *Suttonella* spp. isolated from clinical specimens.

Test results available in as little as two hours and does not require xylene extraction.

15x45mm tube, 0.5ml
10 tubes/pkg..... **Z23**

